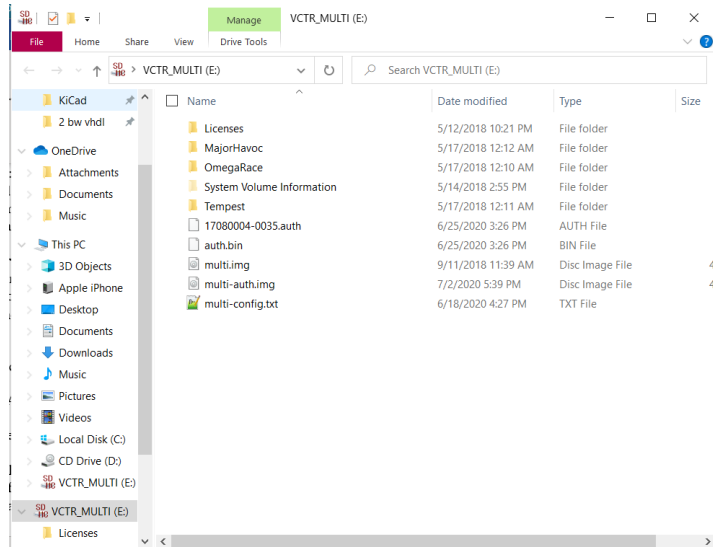
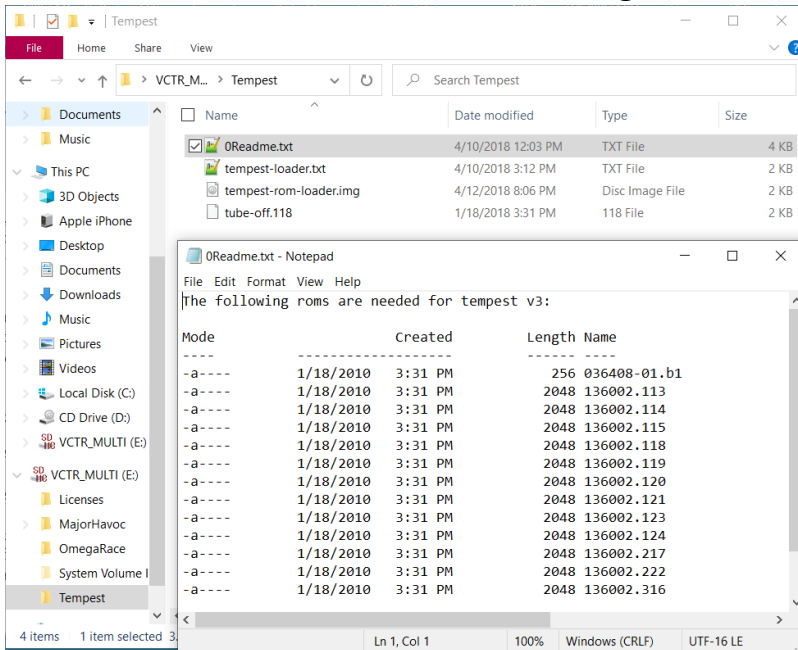


Installation

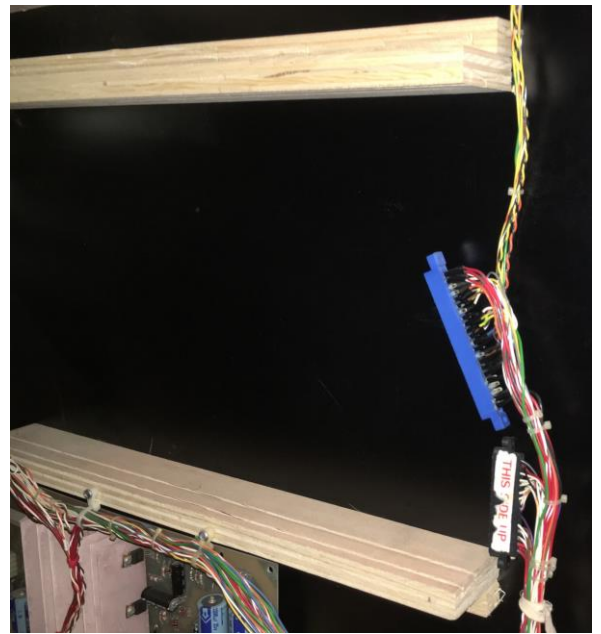


On the blue FPGA board, there is a small MicroSD card. Remove it and install it in your PC.

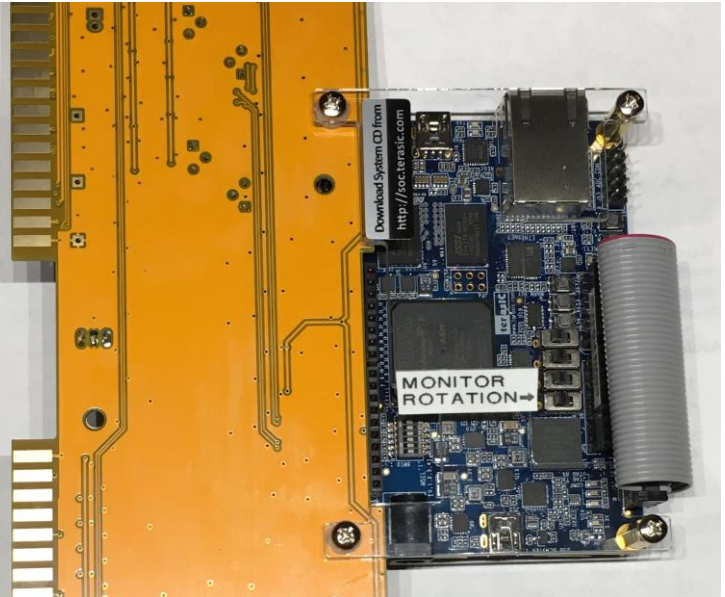
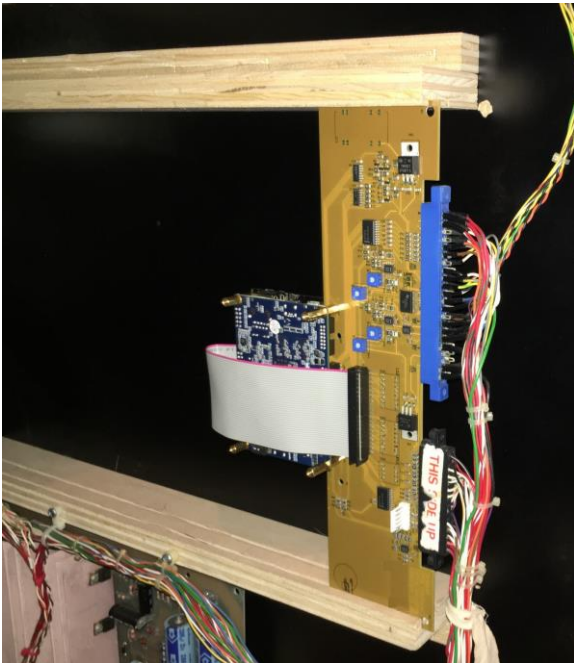
Ignore all request to format or drive errors on the card. Copy your ROMs into the appropriate directories on the card (e.g. tempest ROMs go in the tempest directory). The `multi-config.txt` has the game dip switch settings for all three games.



Note: the names of the ROMs must match exactly the names in the `0README.TXT` file in each of the game directories. They cannot be zipped. Once you have copied the ROMs onto the microSD card, eject the card and reinstall it in the blue FPGA board.



Turn off your tempest. Open the back, disconnect the harness and remove the original tempest board set from the cabinet.



Install the Tempest FPGA multigame board the same way the tempest board was oriented (large connector on top). Reattach both edge connector cables. Turn on the machine. If you got everything right, the game should come up in Tempest. Change rotation switch for horizontal monitors. Press and hold P1 & P2 start for 1 second and release to advance to the next game. **For support, contact info@tempestfpga.com.** You can also find additional help on KLOV “**Tempest FPGA Multigame interest**” thread: <https://forums.arcade-museum.com/showthread.php?t=438283>